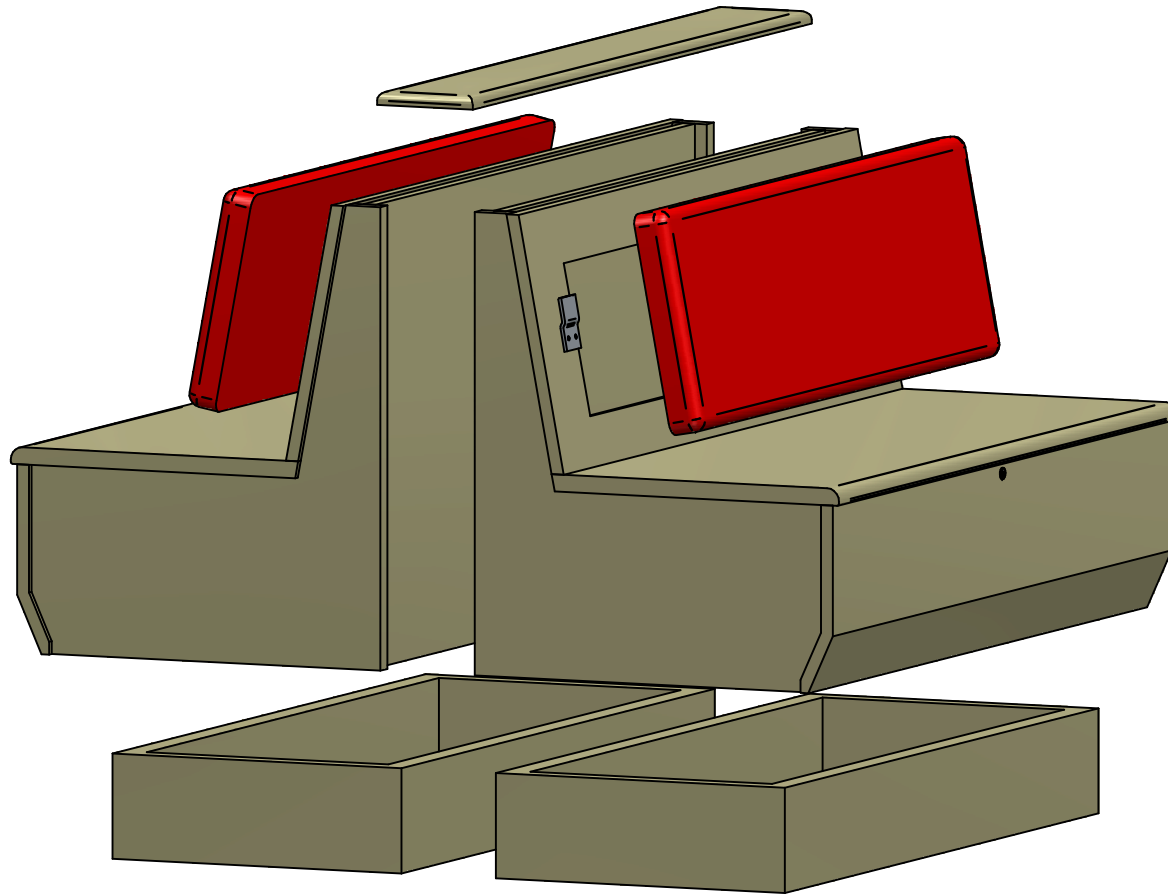


## BOOTH INSTALLATION INSTRUCTIONS:

- 88-0122 Booth 1PS 24W Double
- 88-0125 Booth 2PS 48W Double
- 88-0128 Booth 3PS 72W Double



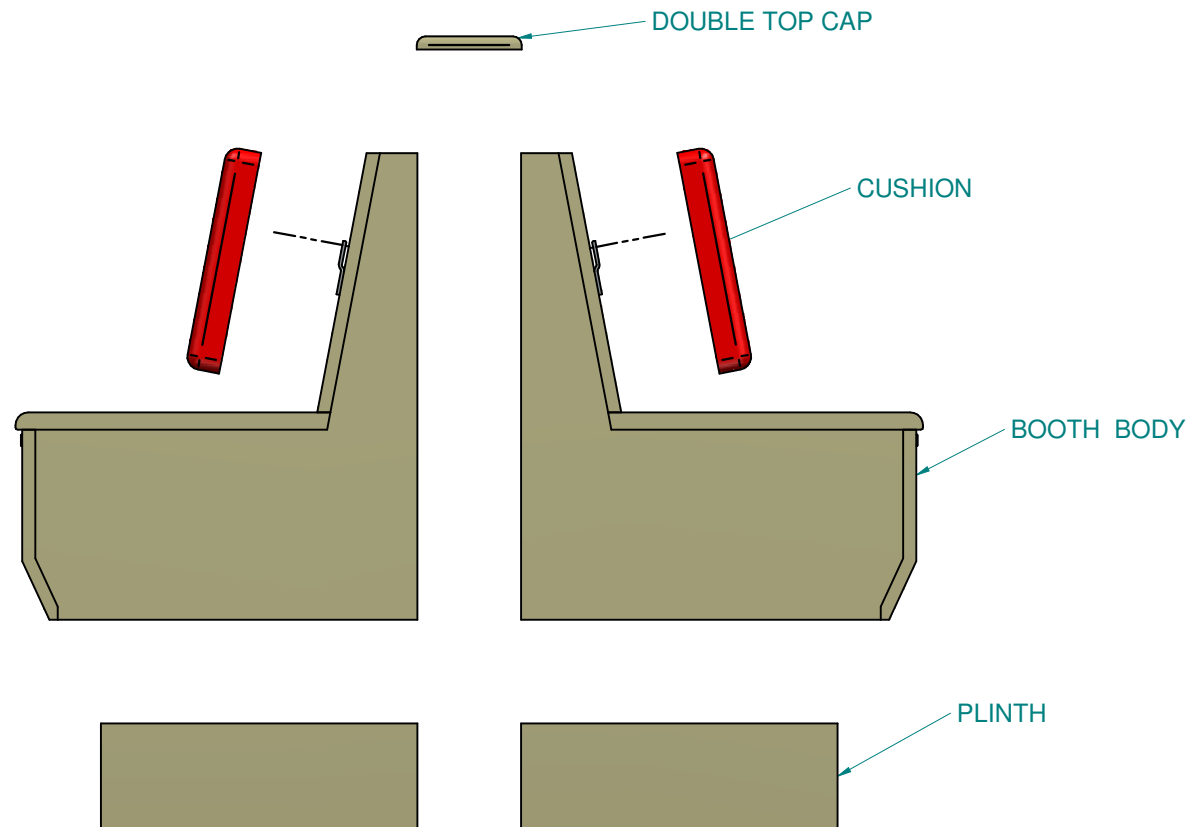
# MATERIALS

Materials Required for Installation (to be provided by Five Guys installation contractor):

- Shims
- Tile drill bit
- 2x4 Blocking
- Screws to attach plinth to floor
- Screws to attach booth plinth
- Trim head screws to attach Top Cap
- Oil Based Filler Putty
- Polyurethane Construction Adhesive

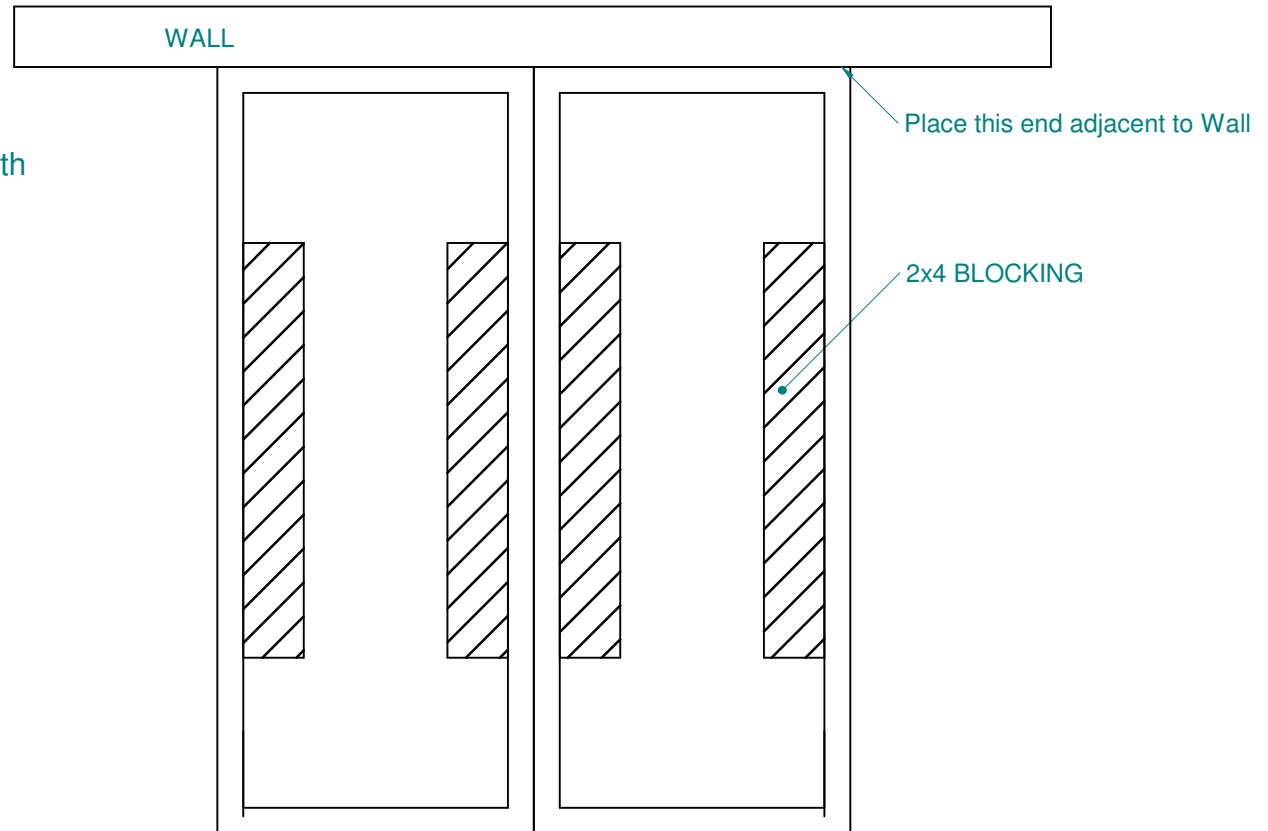
Booth Package Includes:

- Booth Body x2
- Back Cushion x2
- Double Top Cap x1
- Plinth Base x2



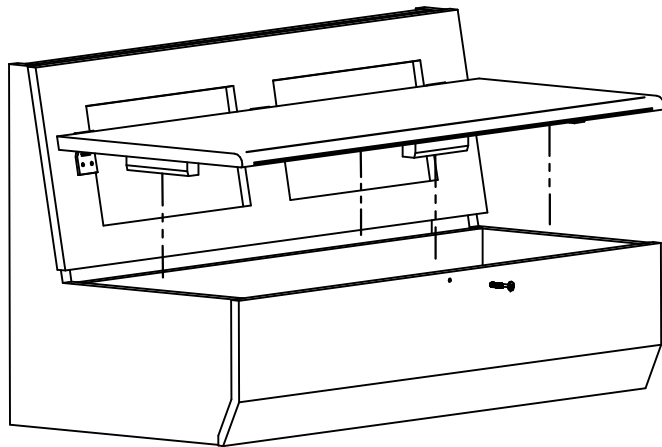
# STEP ONE:

- Remove Plinth from booth body
- Place Plinth on floor in desired location
- Shim Plinth Level
- Attach 2x4 blocking to floor inside Plinth with screws and adhesive
- Screw Plinth to blocking through outside of Plinth
- Screw Plinth to Walls

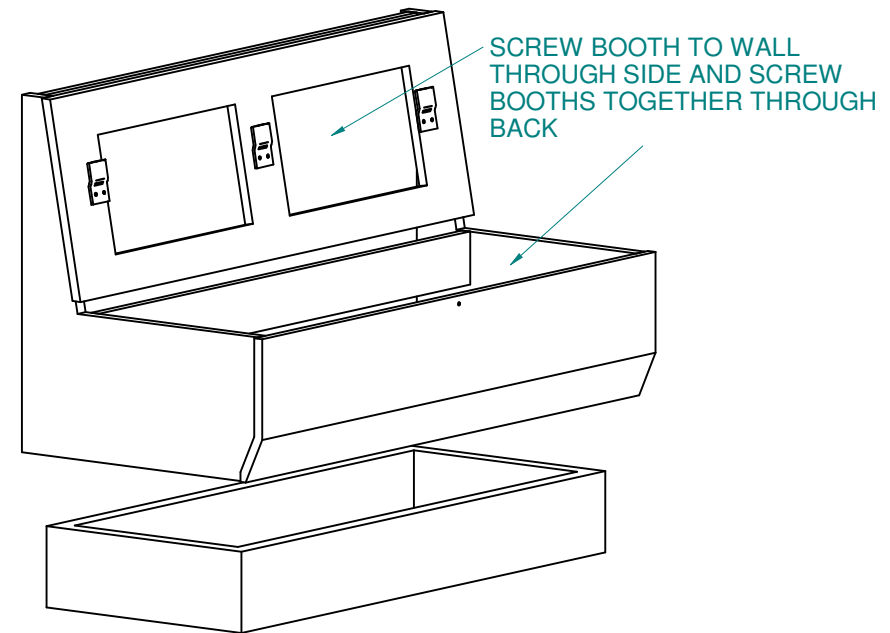


## STEP TWO:

- Remove Back Cushion if it is attached (see page 5)
- Remove Allen Screw from front of Booth
- Remove Seat Panel from Booth (Panels are not interchangeable amongst booths)
- Place Booth on Plinth against wall
- Scribe Booth to wall if necessary
- Anchor Booth Body to Plinth and Wall
  - Screw through booth bottom to plinth corner blocks
  - Screw through booth sides into walls
  - Screw booth backs together



REMOVE SCREW AND SEAT



PLACE ON PLINTH AND ATTACH

## STEP THREE:

- Re-install Seat Panel and screw
- Using trim screws, screw Double Top Cap in place
- Fill nail holes with Putty
- Install Back Cushion by sliding down on to clips and then screwing tabs at bottom of cushion into back panel

